

Charter School Site and Plan Approval for the Charter School Facility Program



**California Department of Education
School Facilities and
Transportation Services Division**

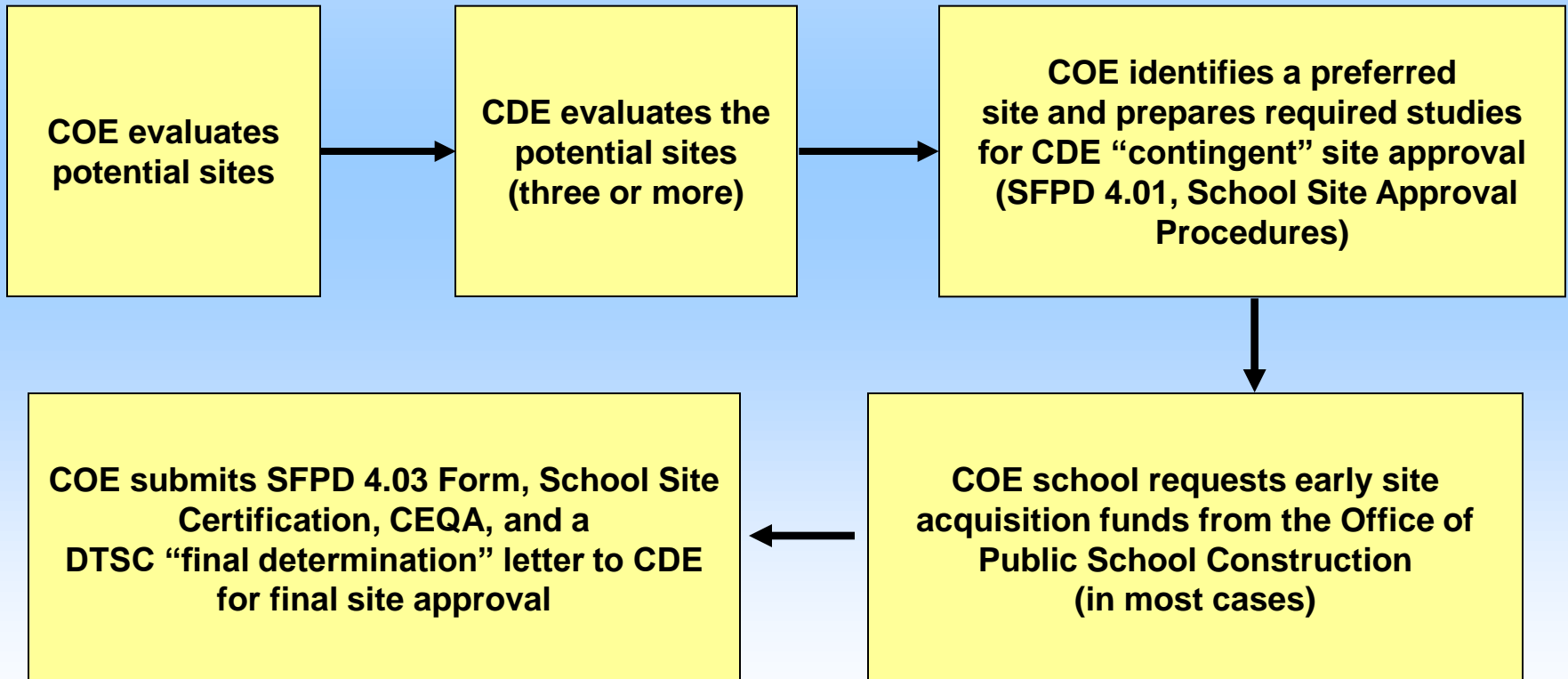


Background

- ***Education Code, Section 17078.54(c)(1)(A)***
CDE approval for charter school applications
- ***Education Code, Section 17251***
- ***California Code of Regulations, Title 5, Sections 14010 and 14030***



Site Approval Process Overview





Resources for Evaluating Potential School Sites

- *School Site Analysis and Development Guide*
- *School Site Selection and Approval Guide*
- Local school districts
- Local planning agency
- Architects



CDE Evaluation of Potential School Sites

Includes:

- ✓ Site size and shape
- ✓ Airports within two nautical miles
- ✓ Pipelines within 1,500 feet
- ✓ Power lines within 350 feet
- ✓ Traffic
- ✓ Surrounding land uses



Prepare Studies for the Preferred Site

- Required studies are listed on the SFPD 4.01, School Site Approval Procedures

- If requesting early site funds from the State Allocation Board, the following are not required:
 - Department of Toxic Substances Control “final determination” letter
 - Completion of CEQA action
 - SFPD 4.03 Form, School Site Certification

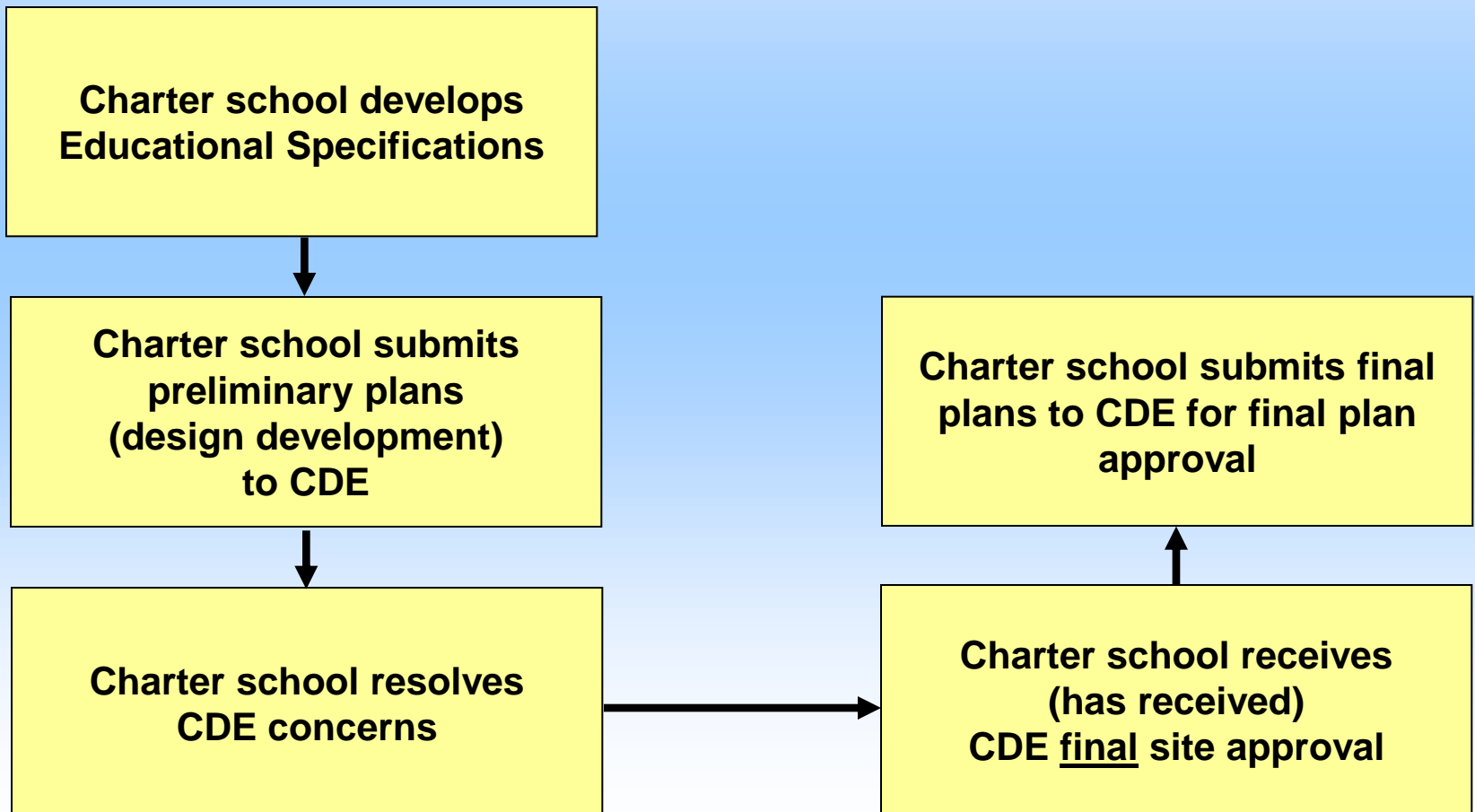


CDE Final Site Approval Requirements

- ✓ Department of Toxic Substances Control “final determination” letter
- ✓ California Environmental Quality Act (CEQA) Notice of Completion
- ✓ A signed SFPD 4.03, School Site Certification
- *A CDE final site approval is valid for five years*



Plan Approval Process Overview





Preliminary Plans

- **Opportunity for early comments from CDE**
- **Easier to make changes**
- **Makes final plan review quicker**



CDE Plan Review Looks at:

- **Includes**
 - **Classroom Size**
 - **Parking lay-out**
 - **Physical Education**
 - **Students per acre**

 - **See Title 5 for complete list.**



Resources on CDE Web

- ❖ *Educational Specifications: Linking Design of School Facilities to Educational Program, 1997*
- ❖ *School Site Analysis and Development Guide, 2000*
- ❖ *School Site Selection and Approval Guide, 2000*
- ❖ *California Code of Regulations, Title 5*
- ❖ **Small School Site Policy**
- ❖ **Staff Assignments**



California Department of
EDUCATION

Contact Information

Questions:

Fred Yeager, Assistant Division Director

fyeager@cde.ca.gov

916-327-7148