



Intimate Places
for Event Spaces

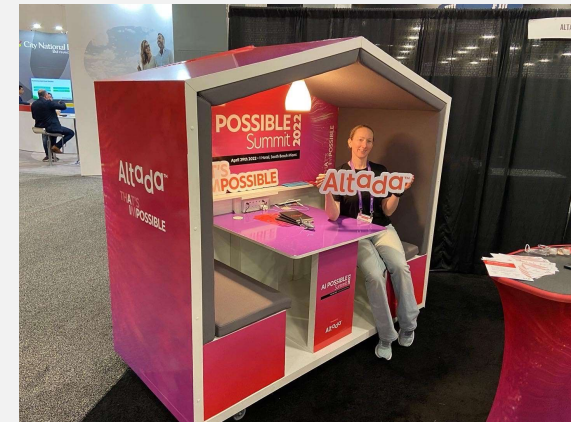


TECHNICAL SPECS, FEATURES, BRANDING OPTIONS/PRICING

Creates personal space
to recharge, reset and
promote wellbeing at
any event.



BOOK A NOOK®





NOOK

event pods

Intimate Places
for Event Spaces

Creates personal space
to recharge, reset and
promote wellbeing at
any event.



Acoustic

Portable

Lighting

Charging

Seating

Storage





Intimate Places
for Event Spaces

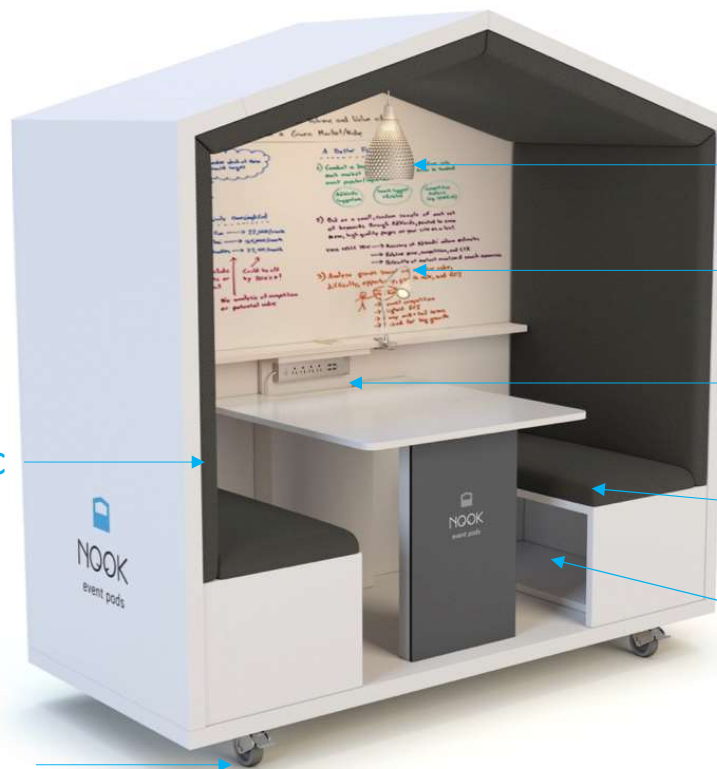
Creates personal space
to recharge, reset and
promote wellbeing at
any event.



Whiteboard



Acoustic



Lighting

Whiteboard

Charging

Seating

Storage

Portable

NOOK
event pods

Intimate Places
for Event Spaces

Creates personal space
to recharge, reset and
promote wellbeing at
any event.



Acoustic

Portable



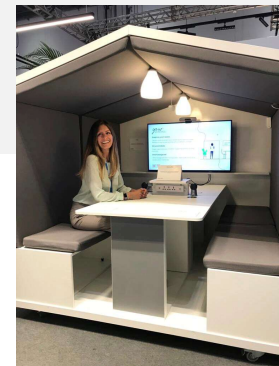
Lighting

Screen

Charging

Seating

Storage




NOOK
event pods

Intimate Places
for Event Spaces

Creates personal space
to recharge, reset and
promote wellbeing at
any event.



Open

Acoustic

Portable



Lighting

Charging

Seating

Storage





Intimate Places
for Event Spaces



Basic Branding for Smaller Budgets



20"x20"
Patch
Side
Wall

10"x10"
Patch
Table
Leg



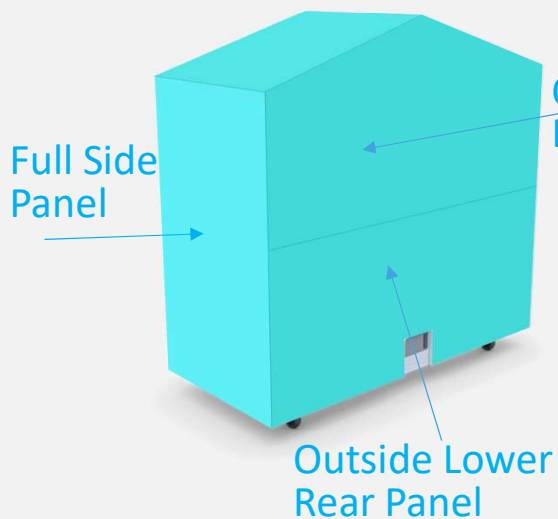
Creates personal space
to recharge, reset and
promote wellbeing at
any event.

All hard surfaces of the
NOOK Event Pod can be
branded with sponsor
messaging



Intimate Places
for Event Spaces

Show off your brand and messaging





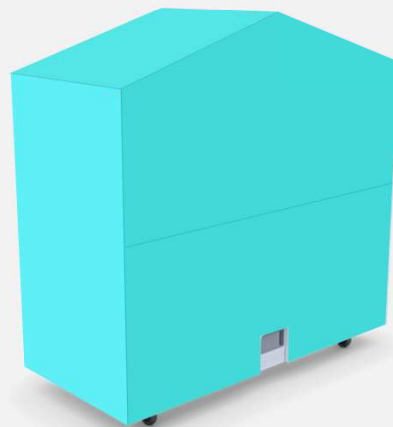
Intimate Places
for Event Spaces

Creates personal space
to recharge, reset and
promote wellbeing at
any event.

Full Wrap Package

Branding Package includes:

- Outside Upper Rear Wall
 - Outside Lower Rear Wall
 - Two Roof Panels
 - Two Bench Seats
 - Two Full Side Panels
 - Full Table Leg
- (Table Top and Inside Walls not included)



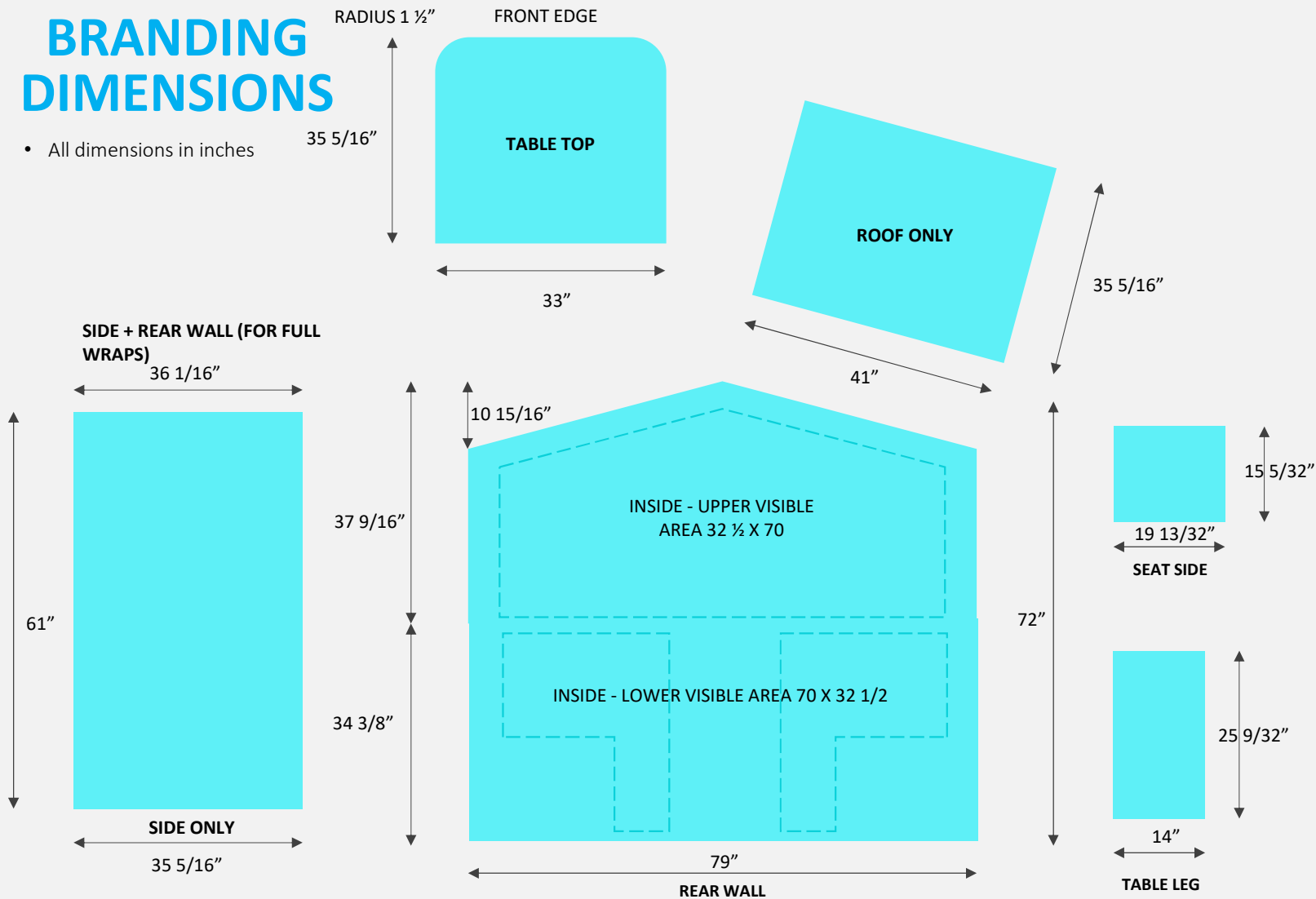


Intimate Places
for Event Spaces

Creates personal space
to recharge, reset and
promote wellbeing at
any event.

BRANDING DIMENSIONS

- All dimensions in inches





Intimate Places
for Event Spaces

Creates personal space
to recharge, reset and
promote wellbeing at
any event.

BRANDING FORMAT SPECS

Finished art preferred:

- Raster files must be submitted AT SIZE and 72dpi preferred. Vector must be either at size or production scale must be included so we can resize to the proper dimensions (i.e., 2:1, 5:1, 10:1, etc)
- All text must be outlined or copies of the fonts used included/embedded within the files. Failure to do so may result in art fees.
- Finished files must include 1" total bleed per side/surface to ensure proper coverage and alignment of all assets during installation. In addition to finished print files, please include any renderings or mock ups that you used on the NOOK Event Pod to create your artwork files.
- Refrain from placing important elements such as text or logos across the outlet box located on the lower back of the NOOK Event Pod.

All assets and finished files must be submitted in CMYK color format. Failure to do so may result in incorrect color output. Please make sure all text or numbers are accurate. We are not responsible for any errors once approval to print has been received. Once production has begun any changes afterwards will incur additional fees.

Art file production requirements:

- Vector-based assets (.ai, .eps, .svg) . PDFs can sometimes contain vector assets but most often pdf saving will rasterize and flatten things so please be careful when submitting them. or Raster (.jpg, .png, .tiff, .bmp) files sent at the size they will appear on the final finished surface and minimum resolution of 150dpi (300dpi preferred).
- Please do not submit very small files or thumbnails, nor should you submit computer/phone screenshots of anything to be used in the final art. If submitting photos from a camera phone please make sure resolution is as high as possible (3mb minimum) to ensure proper appearance in the final product.



Intimate Places
for Event Spaces

Creates personal space
to recharge, reset and
promote wellbeing at
any event.

BRANDING PRICING

PART	DIMENSIONS	CHARGE
Side Patch - Per Side	20" x 20"	\$ 150.00
Side Full - Per Side	H61" x W35 5/16"	\$ 350.00
Table Leg Patch	H10" x W10"	\$ 75.00
Table Leg Full	H25 9/32" x W14"	\$ 120.00
Interior Tabletop	D35 5/16" x W33"	\$ 250.00
Outside Rear LOWER Half	H34 3/8" x W79"	\$ 475.00
Outside Rear UPPER Half	H37 9/16" x W79"	\$ 475.00
Entire Inside Rear Upper Half Wall	H32 1/2" x W70"	\$ 475.00
Entire Inside Rear Lower Half Wall, Contour	W39 1/4" x H20"	\$ 395.00
Front Bench Seat Panel	H15 5/32" x W19 13/32"	\$ 120.00
Rooftop Panels Per Panel	H41" x W35 5/16"	\$ 258.00
Proof with Client Provided Artwork		\$ 100.00
Full Wrap Per Nook - Upper & Lower Outside Walls, 2 Full Side Panels, 2 Roof Top Panels, Full Table Leg and Both Bench Seats (Table Top and Inside Walls not included)		\$ 2,400.00
Design Render		\$ 185.00

Rates for branding includes printing and removal of material. Installation may have additional charges.